

Salisbury Hospice Charity

Autumn/Winter Newsletter 2024



Christmas Raffle
Page 4



The Big Give
Page 7



Oktoberfest
Page 14



*Light up
a Life*

Page 18



Experts in eyes and ears

Specsavers in Salisbury

Book an eyetest at [specsavers.co.uk](https://www.specsavers.co.uk)
Need a hearing check too? You can get one free in store

Salisbury 1 Catherine Street. Tel 01722 412 255



Dear supporter,

Welcome to our Autumn/Winter Newsletter!
Inside, you'll find exciting news, inspiring stories, and various ways on how you can support your local hospice.

As we reflect on an incredible year of fundraising, we are filled with gratitude and excitement, thanks to your unwavering support, we've achieved remarkable success in 2024 so far. Starting with the return of our annual Midnight Walk event, at which hundreds of you lit up the streets of Salisbury, braving relentless rain and raising an incredible £45k for Salisbury Hospice. Not forgetting, the thousands who attended and supported The Salisbury Summer Fair, which exceeded all expectations, raising in excess of £75k.



Looking ahead, we are excited for our newest addition to our events portfolio. Join us for a night of Bavarian fun at our Oktoberfest celebration, taking place on 19th October at The Salisbury Arts Centre! Experience an authentic taste of Germany with traditional beers, delicious food, and lively music.

Returning this year to St Thomas's Church is our annual Light up a Life event. Taking place on Sunday 24th November. We invite you to join us at this heartfelt service to remember and celebrate the lives of our loved ones. See page 18 for further details. We hope you will consider donating to our Light up a Life appeal, as your donation, no matter the size, can make a profound difference. It will help provide essential care, comforting support, and cherished moments of peace for those who need it most.

If you are feeling lucky this festive season, then don't miss out on our Christmas Raffle! For just £1 a ticket, you will have the chance to win one of five fantastic prizes! Every ticket you buy supports the vital work of Salisbury Hospice. More on the raffle on page 4.

We are pleased to launch our new range of Christmas cards for this year. Our beautifully designed cards and selection of merchandise make thoughtful gifts for your loved ones, while also supporting a great cause! See our full range on pages 16 and 17.

A huge thank you to everyone who has supported us throughout the year. Your kindness and dedication are the driving force behind our success. Together, we are making a lasting impact in our community.

Nikki Spicer

CHAIR OF TRUSTEES

Salisbury Hospice Charity

Odstock Road
Salisbury
SP2 8BJ

Charity Tel: 01722 416353

Hospice Tel: 01722 425113

Email: info@salisburyhospicecharity.org.uk

Web: www.salisburyhospicecharity.org.uk

[facebook.com/salisburyhospice](https://www.facebook.com/salisburyhospice)

twitter.com/salisburySHC

[instagram.com/salisburyhospicecharity](https://www.instagram.com/salisburyhospicecharity)

This newsletter is produced twice a year. If you have any comments we would very much like to hear from you. If you would prefer to receive the newsletter by email or not to receive it at all please either email, telephone or write to us using the details provided.

Salisbury Hospice Charity is a Registered Charity (No. 1123314) and a Company Limited by Guarantee registered in England (No. 6525170)

We are delighted to be working in partnership with Roma Fundraising to produce this publication at a reduced cost through the kind contributions of local advertisers. To advertise in future editions, please call **01706 719 972** or visit romafundraising.co.uk

Inside this issue

Page 3 Welcome And Introduction

Page 4 Christmas Raffle

Page 6 Peter Gillam Project

Page 7 The Big Give

Page 8 Corporate News

Page 9 Thank You To Our Volunteers

Page 10 Community News

Page 12 The Salisbury Summer Fair

Page 13 Free Will Scheme

Page 14 Oktoberfest

Page 15 Midnight Walk

Page 16 Christmas Cards

Page 17 Merchandise

Page 18 Light Up A Life

Page 19 Dates For Your Diary

Page 24 Donation Page



Winter Raffle

Win one of five exciting prizes!



One Night Break with Three Course Dinner for Two at Bishopstrow Hotel & Spa

Faulty Towers Dining Experience for Two, in London

One Year Family Membership to Wilton House and Grounds

Four Tickets to Sleeping Beauty, Christmas Panto at Salisbury Playhouse

Everyman Cinema Salisbury Membership - Inc 6 Free Tickets

Drawn on Friday 13th December
Raffle tickets enclosed. Please complete and return them using the freepost envelope provided.

Tickets £1



JONES & COMPANY



Proud to support 'Salisbury Hospice'

TEL: 01722 335353
Email: reception@joneskitchens.co.uk
www.Joneskitchens.co.uk



Myddelton & Major

Proud to support Salisbury Hospice

Chartered Surveyors & Estate Agents

Commercial: 01722 337577 Residential: Sales 01722 337575 Lettings 01722 337579
www.myddeltonmajor.co.uk



Peter Gillam Project



The Peter Gillam Support Centre is to receive a fresh new look in 2025. Following on from the refurbishment of the Treatment Room in the Inpatient Unit in 2023, we are very proud to announce that, thanks to funding from the Wolfson Foundation and The National Lottery Community Fund, the next stage of refurbishment will be that of the Peter Gillam Support Centre.

The Peter Gillam Support Centre offers a safe, friendly space for patients to connect with others in similar situations and receive guidance from specialist trained staff. Patients from the community attend 'The Living Well' programme once a week for 12 weeks, and those in the inpatient unit can also participate if they feel able. There are also creative therapy sessions giving the opportunity for introduction to the hospice environment; not only as a place for end-of-life care but as a place to be able to learn how to live well.

Applications for funding were successful earlier this year, and have been added to money already given for Peter Gillam use. The plans for refurbishment, in partnership with Salisbury Foundation Trust, were originally to reconfigure the Peter Gillam Support Centre, and to make better use of the space. With this refurbishment set to include larger accessible toilets, and piped

oxygen throughout, it will enable us to provide this vital service to more people. We were delighted recently by the news that the plans had come in under the original budget, and so we have worked with the Trust, the architects and contractors to expand the original scope to include new furniture and windows in the Centre, and an uplift of the Family Room. At time of going to press, these plans are being finalised.

We are confident that when work starts, the estimated completion time will be 8-12 weeks. This is within the expected time for similar sized projects across the hospital site, and therefore should be completed by the end of the year. We are delighted to be working in partnership with the hospital team to ensure that through the Peter Gillam Support Centre we continue to deliver the service with as little disruption as possible.

We look forward to offering a larger, more useable space in the centre, with all our patients – including those with neurological conditions – being able to access this with ease, whilst maintaining our 'home from home' environment.



In July we said farewell to our very own Head of Fundraising, Paula Flower. Paula has steered the Fundraising Team's ship for 8 years, from Bubble Rush, Wessex Country and Salisbury Summer Fairs, Midnight and Celebration Walks, Up the Downs, and many other events and successes in between. In Paula's 8 years, the charity have raised £16 million for Salisbury Hospice a huge achievement, and one that reflects the community's commitment to our amazing local charity. Thank you Paula, you will be missed, but we know you're going to have an INCREDIBLE retirement!

The Big Give Supporting Hospice at Home

3rd December - 10th December
**Double Your Impact:
Support Hospice at Home**

Christmas
Challenge

BigGive

The demand for Hospice at Home care in our community is increasing, we need your support to grow this vital service. By helping us grow, we can ensure that more patients have access to the essential, specialised care Hospice at Home provides, in the comfort of their own homes, so that they may live well and die with dignity in a place of their choosing.

The Impact of Hospice at Home:

- **Comfort and Dignity:** Our service ensures that patients can experience the end of life with dignity, in the environment where they feel safest and most comfortable.
- **Support for Families:** It allows family members a break, which can be comforting for both the patient and their loved ones. It enables families to spend more time together during the final stages of life.
- **Comprehensive Care:** We offer not just hands-on, practical care, but emotional, spiritual, and psychological support, ensuring that all aspects of our patients' needs and wellbeing are met.

Our Hospice at Home team is dedicated to providing compassionate care and support to patients and their families during difficult times. This Christmas, you can make a difference by supporting our Hospice at Home service. Your donation will ensure that our patients receive the care they need, in the comfort of their own homes, surrounded by their loved ones.

When Does the Challenge Start?

Mark your calendars for Tuesday, 3rd December, the challenge kicks off at midday, and you'll have just seven days to donate. The window to donate closes midday on Tuesday, 10th December, so don't miss out on this opportunity to double your impact!



Why Wait Until Then?

Register your interest to donate. Once donations are open, we will contact you with all the necessary details. Your support will help ensure that our Hospice at Home service continues to provide essential care to those in need. Register by emailing katie.j@salisburyhospicecharity.org.uk.

Double Your Donation!

Here's how it works: We have been fortunate to secure pledges to match every donation made during the challenge, therefore for every pound you donate, another pound will be added to our fundraising pot. These match funds are only available during the Giving Week.

How to Donate

Making your donation is simple:

- **Online:** www.salisburyhospicecharity.org.uk/christmaschallenge
- **By Phone:** 01722 416353

This Christmas, you can make a difference by supporting our Hospice at Home service.

Corporate News

Jail & Bail

Local Businesses Rally for a Fun-Filled Day of Fundraising

We are thrilled to announce the overwhelming success of our first-ever "Jail and Bail" fundraising event, held on Friday 7th June. The day was filled with fun, laughter, and a strong sense of community spirit as local businesses banded together to raise vital funds for Salisbury Hospice.

Four local businesses, Salisbury Radio, Brighter Days Care at Home, Tesco Extra Salisbury, and Fawcetts Accountants, enthusiastically participated in this light-hearted yet impactful event. The concept was simple: colleagues were fictitiously "arrested" for humorous crimes, and their release depended on their ability to raise bail money for Salisbury Hospice.

The event kicked off at 8:30 AM when Craig Hicks, local radio presenter from Salisbury Radio, was the first to be "arrested" by Wiltshire Police, who graciously supported the community fundraising effort. His crime? Stealing all the chocolate biscuits! Craig even brought the "evidence" with him to court, adding to the day's humour.

Next in line was Tesco Extra Manager, Patrick Piercy, apprehended at Tesco Express Salisbury for his "Chronic Habitual Tardiness." Fortunately, Patrick wasn't late for his court appearance! Following this, Zena Embleton, of Brighter Days Care at Home, branded the "Sugar Rush Robber," and Emma Belcher, accused of "Confectionery Coercion," were arrested outside Reeve the Baker, who generously provided pastries for our prisoners.

The final arrest of the day was a surprise for the staff at Fawcetts Accountants, as Trevor Austreng was taken into custody for the crime of "Retiring from Fawcetts" after 51 years of service. His colleagues attended court with great enthusiasm to witness his sentencing.



The proceedings were overseen by our magistrate, Paul Sample, at The Guildhall, with lively announcements throughout the day by Salisbury Town Crier, Jef Hutchby. After sentencing, the prisoners were led by an executioner to Live Escape Salisbury, where they were locked behind bars. Their mission? To raise £999 in bail money by 4 PM. The prisoners were kept well-fed thanks to snacks from Tesco Extra Salisbury and delicious Nole Pizza.

We are delighted to report that these five "suspect criminals" raised an incredible £10,112.89, with donations still trickling in. The success of this inaugural event has exceeded all expectations, and we are already planning next year's Jail and Bail event.

Spots for next year's event are limited to ten, so if your company would like to participate in this unique and entertaining fundraising opportunity, please contact Louise, our Corporate Fundraiser, louise@salisburyhospicecharity.org.uk.

As the saying goes, 'A picture paints a thousand words', and the photos from this event truly capture the joy, camaraderie, and generosity of everyone involved. We extend our heartfelt thanks to all participants, donors, and supporters for making this event a resounding success.

For more information about Salisbury Hospice Charity and how your company can get involved in future events, visit www.salisburyhospicecharity.org.uk.

Thank You To Our Incredible Corporate Volunteers

Salisbury Hospice Charity extends our deepest gratitude to the dedicated volunteers who have generously given their time, skills, and resources to support our work.

Salisbury Summer Fair

Our Salisbury Summer Fair was a resounding success, and we owe much of that to the generous companies who volunteered their time. From setting up before the event, to packing down afterward, your efforts ensured the day ran smoothly and was enjoyed by all.



Midnight Walk Volunteers

Thank you to Holistic Academy, Zoe Holistic Therapies, Equilibria Massage, and Sarum Massage for your invaluable support. Your kindness provided much-needed relief to our participants and added a special touch to the event.

Office Makeover at the Hospice

A special thank you to the teams from Nucleus and Fexco Property Services, who dedicated three days to transforming our hospice offices. By picking up paint brushes and brightening up the spaces where our Community Palliative Care team works, you've contributed significantly to the well-being of our staff. This vibrant environment will positively impact our team for years to come. We also extend our thanks to Brewers and Dec Hands Ltd. for generously donating all the supplies needed for this project.



Garden and Outdoor Projects

We are truly grateful for our regular team of volunteers who maintain our hospice garden. A special mention goes to Steve Trevett and Mike Hornsey who worked tirelessly alongside a wonderful team from Trethrowans Solicitors. Despite the rain, you helped restore this special place. It's heartwarming to see signs of wildlife returning to the pond.



Media and Creative Support

We're grateful to Salisbury Radio, Radio Odstock, and our talented photographers and videographers—Spencer Mullholland, Donald Capewell, Ash Mills, Andrea Penna, and Brunton Media for supporting our events and helping us share our story.



Community News

Thank You for Your Amazing Support!

Sam Butt and Maree Lumber

Congratulations to Sam and Maree for their amazing performances in the London Marathon! Sam, with a time of 04:27:29 and **£2,806** raised, and Maree, finishing just seconds later at 04:27:48 with **£1,035** raised, you both have achieved something truly remarkable, thank you.



Sarah Gibson

A huge congratulations to Sarah for completing the South Downs Way 100 on the 8th June – running from Winchester to Eastbourne! Sarah completed her second Ultra Marathon in support of Salisbury Hospice in 28 hours and 25 minutes, raising a whopping **£2,820!**



Huge Thanks to Our Snowdon Heroes!

In May, Freddie Bawden accompanied by his dad and auntie. This remarkable young man raised **£2,913** in memory of his grandad Christopher. Meanwhile, Alice Cousins and Kathryn Partridge completed the Snowdon Marathon, raising an incredible **£4,560** in memory of Alice's mum Helen. **You're all truly inspiring—thank you!**

We want to extend our heartfelt thanks to each and every one of you who took on a challenge in support of Salisbury Hospice Charity. Your dedication, energy, and passion have made a real difference. **If you would like to know more about upcoming challenge opportunities, please email neve@salisburyhospicecharity.org.uk**

Brian Allen

Through his fundraising efforts over the years, Brian reached an incredible fundraising milestone in May.

From organising coffee mornings, to participating in various sports and challenge events, Brian has raised **£10,000** for Salisbury Hospice Charity. In July, Neve, our Community Fundraiser, met with Brian to celebrate this amazing milestone. Over a cup of tea, they discussed all of the challenges he had accomplished throughout the years in support of Salisbury Hospice - abseiling the Spinnaker Tower, doing the zip wire in North Wales, undertaking a Wing Walk, completing a Fire Walk, and many, many more!

During their conversation, Brian also shared stories from his personal life, reflecting on his time in the RAF, his adventures around the world, and his cherished memories with his beloved wife of 46 years, Jenny. Jenny's time in Salisbury Hospice inspired Brian's unwavering support for our charity over the past decade. We are deeply grateful for Brian's dedication and generosity in supporting Salisbury Hospice Charity.

Thank you, Brian, for your continued support and for making such a meaningful difference.



Navy Larks and All at Sea

On the 17th May, The Navy Larks and All at Sea hosted a Shanty Evening in memory of Jacky Lumby. The event was a fantastic success, raising **£1,187** for Salisbury Hospice Charity and the Swan Song Project. The music, hospitality, and atmosphere were truly captivating. Thank you.



Grimsdyke Goose Fair

The Grimsdyke Goose Fair held on the 4th August, organised by Jim and Pam Butt with their amazing team, raised an incredible **£13,500** for Salisbury Hospice. The event, featured auctions, a car boot sale, and a tea tent, exceeded all expectations and brought the community together. A huge thank you to everyone who made this inaugural event a resounding success—you're all superstars!



£25k Raised at Open Garden Event!

A huge thank you to the Tisbury Fundraising Committee, our dedicated volunteers, and our gracious hosts, Sir Henry and Lady Rumbold, for their exceptional hospitality and generous support.

With breathtaking views of the Vale of Wardour, the event featured vintage and designer clothing, antiques, children's items, books, and collectables. Attendees enjoyed homemade cakes, teas, BBQ, Pimms, and ice cream while exploring the stunning 17th-century gardens.

A huge thank you to the Tisbury Fundraising Committee and their generous hosts, Sir Henry and Lady Rumbold, for their exceptional hospitality and support.



Car Boot Sale

On a lovely Bank Holiday Monday morning, our second annual May Day Car Boot Sale raised an impressive **£1,300!** The event was hugely popular, with eager buyers queuing before the gates even opened and over 40 sellers setting up their stalls. **It was a lovely and enjoyable day for all involved!**

Record-Breaking Fabulous Family Fun Day Raises £31k!

The 10th annual Fabulous Family Fun Day, sponsored by Ozweld International in memory of Lyn Fitcher, was a phenomenal success, raising over **£31,000!** Highlights included popular football and touch rugby tournaments, live music, a new performance arena, and a raffle with a Turkey holiday prize.

Thank you to all our sponsors, the Fabulous Committee, Salisbury Rugby Club, prize donors, performers, volunteers, and everyone who attended. Your support made this total possible!



The Salisbury Summer Fair



The Salisbury Summer Fair raises £75k!

We are extremely grateful to everyone who attended The Salisbury Summer Fair and contributed to making it such a success. Thanks to your generosity and enthusiasm, we raised an astounding £75,000. The highest total raised from the event to date! We were blessed with beautiful sunny weather, and it was heartwarming to see so many families enjoying the day together.

The Salisbury Summer Fair not only provided a day of joy and entertainment but also highlighted the strength and spirit of our local community. The funds raised will go directly towards supporting the essential services provided by Salisbury Hospice, ensuring those in need receive the compassionate care they deserve.

This event would not be possible without the kind support we receive each year from The Earl and Countess of Pembroke, The Wilton House Estate Team, Duncan Scott, Jason Judd, Linda Barrett and our team of amazing volunteers.

We would like to extend our thanks to our headline sponsor, WBR Group and our additional sponsors whose support was instrumental in making this event possible.



"Firstly, Wow! We are overwhelmed by the incredible support and generosity shown by everyone who attended The Salisbury Summer Fair. The funds raised will make a significant difference in helping us continue to provide vital care and support to our patients and their families. Our heartfelt thanks to all the performers, exhibitors, volunteers and attendees who made this event such a success."

Greig Fatcher, Event Fundraiser, Salisbury Hospice Charity

Free Will Scheme

Free Will Scheme

In collaboration with Parker Bullen LLP, Salisbury Hospice Charity are encouraging local people to make or amend their will. Whilst there is no obligation, we hope you'll consider leaving a legacy to us to help secure the future of hospice care in Salisbury.

Parker Bullen

- Contact: Kirsty Gazzard
- 45 Castle Street, Salisbury, SP1 3SS
- Email: kirsty.gazzard@parkerbullen.com
- Phone: 01722 412000



Fawcetts

CHARTERED ACCOUNTANTS AND BUSINESS ADVISERS

At Fawcetts, we believe in putting our clients first, so when we say that we will support you every step of the way – from the start of your business life to planning for retirement and beyond – that's exactly what we will do.

As a partner-led, independent firm, we add value to our accountancy and tax knowledge with first hand experience of the issues involved in building and running a business, so we are ideally placed to help your enterprise to develop and grow and to assist you in taking good care of your personal finances.



T: 01722 420920 F: 01722 411375
E: partners@fawcetts.co.uk

www.fawcetts.co.uk

Herrington Coaches

Offering the very best in comfort for all of your travelling needs.

Tel: 01425 652842

www.herringtoncoaches.co.uk
enquiries@herringtoncoaches.co.uk

R B U K

LEGAL RECRUITMENT



Careers in Black & White

0161 745 7517 www.rbuklegal.com

Oktoberfest



Saturday 19th October

Time: 6pm - 11pm

Venue: Salisbury Arts Centre

Get ready for an evening of unforgettable fun on Saturday 19th October, as Salisbury Arts Centre transforms into a vibrant hub of Oktoberfest excitement. This is your chance to experience the best of Bavarian culture right in the heart of Salisbury, all while supporting a vital cause.



Tickets are available now, but they're selling quickly. Don't miss out on your chance to be part of this unique event. By attending, you're not just in for a great time; you're also contributing to the vital work of Salisbury Hospice.

Secure your tickets today, and join us for an Oktoberfest to remember!

*Tickets are for over 18s only. We will be operating a strict Challenge 25 policy.

www.salisburyhospicecharity.org.uk



Round up your friends and family, grab your tickets, and dust off your Lederhosen or Dirndls for a night filled with laughter, live music, and two pint steins!

Oktoberfest is the perfect opportunity to enjoy authentic German beers and feast on traditional bratwursts served by Charter 1227. Whether you're a beer lover or simply there for the atmosphere, the selection of brews will not disappoint.

The night promises to be a spectacular one with a lively oompah band setting the tone, followed by DJ Kev, who will keep the energy high with a mix of Euro hits that are sure to get everyone dancing.



Midnight Walk



On Saturday 27th April, Salisbury Hospice Charity welcomed 343 walkers to Five Rivers Leisure Centre to take on our annual Midnight Walk event in a fun, yet incredibly moving sponsored walk. The event raised £45K for Salisbury Hospice!

Every walker, marshal and volunteer was dressed in vibrant neon outfits, all set to illuminate the streets of Salisbury as they embarked on their chosen 6 or 10-mile route. The event kicked off with an energetic warm-up led by Beth Whitworth on stage, with DJ Kev accompanying from Radio Odstock.

Despite the torrential and relentless rain, the walkers returned drenched and smiling, filled with a strong sense of accomplishment and determination to support Salisbury

Hospice in their mission to raise vital funds. The funds raised from Midnight Walk will enable the hospice to continue providing the vital, end of life care, which directly benefit patients and families within the community.

Salisbury Hospice Charity would like to thank all the participants, volunteers, and support we have received to put on this 'glow'tastic event. A special thank you goes to our sponsor Webbed Feet.

Midnight Walk is back for 2025 with a passion, on Saturday 26th April. Get ready to step out in your sparkles and rock the town in style in next year's Glitter and Glam-rock theme."

Sign up at: www.salisburyhospicecharity.org.uk

Christmas Cards

With Christmas just around the corner, we're thrilled to announce that our 2024 Christmas cards are now available!

Our collection of Christmas cards offers something for everyone, whether you prefer contemporary, traditional, religious, or cute animal designs. Plus, all our cards are fully recyclable, making them a festive and eco-friendly choice.

By purchasing these cards, you're not only spreading Christmas cheer but also supporting the vital work of Salisbury Hospice. At just £4.95 for a pack of 10, they're a perfect way to give back this Christmas.

You can order yours today using the enclosed form, through our online shop, or at selected retail outlets across the city. For more information, visit www.salisburyhospicecharity.org.uk



Festive E-Cards

New this year: We're excited to introduce e-cards!

Choose from a fantastic selection of Christmas cards that you can send for free via email or WhatsApp. Spreading the festive joy online saving you the cost of postage. Why not make a donation to Salisbury Hospice Charity instead of paying postage this year.

Take a look at our festive e-cards:



DontSendMeACard.com

Merchandise

Support Salisbury Hospice in style with our gift collection! We've got something for everyone, from sustainable "dishwasher approved" reusable travel mugs to vibrant eco-friendly pens perfect for jotting down those important notes in our stylish notebooks and diaries.

Need a practical gift? Our trolley key ring is a lifesaver for anyone who never has a spare pound for the supermarket trolleys! Or, show your support with a smart lapel pin badge.

Looking for the perfect Christmas gift? Explore our Robin range, featuring a beautifully painted robin print by Louise Luton available in both framed and unframed options.

Add a touch of elegance with our uplifting and calming scented candles, inspired by the beauty of an English garden which can be complemented by charming glass-bottled coloured matches for a truly delightful present.

Explore our online shop, visit www.salisburyhospicecharity.org.uk



Recycle your Christmas tree

for **Salisbury Hospice Charity**
and other local charities

We welcome donations in return for the collection and recycling of your real Christmas tree

Kindly sponsored by

Sampson CoWard

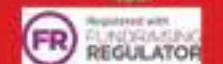
In partnership with **JUST-HELPING**

Collecting between **10th - 12th January 2025**

JustHelping supports volunteers, businesses and charities to contribute to their community and the environment. Our national Christmas tree collection raises essential funds for hospices and communities.



Register your tree from 15th November at charityxmastreecollection.com



Light up a Life



Sunday 24th November

Time: 2pm

Venue: St Thomas's Church

As the Christmas season approaches, we recognise that this time of year can be particularly challenging for those who have lost a loved one. At Salisbury Hospice Charity, we invite you to join us for our annual Light Up a Life service, where we come together to honour and celebrate the lives of those who are no longer with us, but always in our hearts.

This year's service will take place in the beautiful setting of St Thomas's Church, Salisbury, right in the heart of our community. The event will include heartfelt readings and carols, offering a moment of reflection and solace. Attendees will have the opportunity to light a candle in memory of someone special, each flame representing cherished memories and the enduring love we hold for those we've lost.

Whether or not you have a direct connection to Salisbury Hospice, you are warmly welcome to attend. The service is open to all who wish to remember and celebrate the life of a loved one during this poignant season.



After the service, we invite you to join us for mulled wine and mince pies, providing a chance to come together as a community in support of one another.

Your Support Can Make a Difference This Christmas

We kindly ask for your support of our Light Up a Life Appeal. Every donation to our Light Up a Life Appeal helps ensure that we can continue providing essential services—whether it's offering emotional support, pain relief, or simply being there for patients and their families at a time when they need it most. Your generosity allows us to bring light into the lives of those who are facing some of their darkest days. This year's Light Up a Life service is generously sponsored by Parker Bullen Solicitors.



How to Donate

By donating online you will be able to leave a dedication to a loved one.

Online: www.salisburyhospicededicationpage.org/lightupalife/

By Post: use the enclosed appeal form
Your contribution will help us bring comfort and care to those who need it most within our community.

Kindly sponsored by
Parker Bullen
Solicitors



Dates for your Diary



11th October 2024
Corporate Gala Quiz



19th October 2024
Oktoberfest



24th November 2024
Light Up a Life



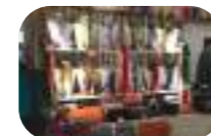
3rd – 10th December 2024
The Big Give: Christmas Appeal



December 2024
ELF Run



10th – 12th January 2025
Christmas Tree Collection



31st January 2025
Sale of Sales



February 2025
Payroll Giving Month



26th April 2025
Midnight Walk



27th April 2025
London Marathon



27th April 2025
Fonthill Open Garden



5th May 2025
May Day Car Boot Sale



10th May 2025
Fabulous Family Fun Day

Easy Ways to Support Us

EASYFUNDRAISING

If you're planning on doing some online shopping, sign up to Easyfundraising and turn your shopping into donations www.easyfundraising.org.uk

GIVEACAR

Do you own a vehicle that you want to sell or get rid of? Then please think about donating it to us through Giveacar. They provide a nationwide FREE service!

To arrange a donation of a car www.giveacar.co.uk or call 020 7736 4242 quoting *Salisbury Hospice Charity*

HOSPICE LOTTERY

Have you heard about Your Hospice Lottery? The Your Hospice Lottery draw is a fun and easy way to support Salisbury Hospice Charity, plus you could win up to £25,000! www.yourhospicelottery.org.uk

PAYROLL GIVING

Payroll Giving, is the most tax efficient way to give, donating directly through your salary. Email: louise@salisburyhospicecharity.org.uk for further details or speak to your employer.

REGULAR GIVING

Now more than ever before, regular monthly donations are vital. Knowing that each month we have guaranteed funds will allow us to plan and continue our services. A small monthly donation can make a big difference. Please use the donation form on the back of this newsletter to set up your regular donation.

SHAREGIFT

Small shareholdings are often worth less than they would cost to sell but did you know you can donate them and help raise funds for Salisbury Hospice? Donating shares can be a very tax efficient way to give. www.sharegift.org

RECYCLE 4 CHARITY

Recycle your ink cartridges via our Recycle4Charity programme. To start, all you need to do is go to the link below and sign up. www.recycle4charity.co.uk



“She's my lovely blue angel.”

Care in your home, just as you like it.

You love your home and you feel safe there. Needing additional care and support shouldn't change that.

You may be in a position where you need an extra pair of hands or have more complex needs. Bluebird Care delivers award-winning home care as individual as you are, so you and your family can rest assured you will receive the support you need.

Call our friendly team today

Bluebird Care Wiltshire South
bluebirdcare.co.uk/wiltshire-south
 01722 568 930

Home
 is where the heart is
Let's keep it there



THE NEW ALL-ELECTRIC MINI COUNTRYMAN.



MINI TO THE MAX.

Combining state-of-the-art technology and rugged design features, the new all-electric MINI Countryman is the biggest MINI yet. Longer, taller, and now featuring a sleek new dashboard complete with a circular touchscreen – get ready to take every adventure to the max. Find out more about the new all-electric MINI Countryman today, then get ready for a bolder road ahead.

Contact Marshall MINI Salisbury to find out more.

Marshall MINI Salisbury
 London Road, Salisbury, Wiltshire, SP1 3YU
www.marshallsalisburymini.co.uk



All-electric MINI Countryman: Electric Consumption (WLTP combined): 3.4 – 3.9 miles / kWh; CO2 Emissions (WLTP combined): 0g/km; Electric Range (WLTP combined): 245 – 287 miles, figures provided.

Figures are for comparison purposes and may not reflect real life driving results which depend on a number of factors including the starting charge of the battery, accessories fitted (post registration), variations in weather, driving styles and vehicle load. They were obtained after the battery had been fully charged. The MINI Electric is a battery electric vehicle requiring mains electricity for charging. The electric range was measured according to a new test (WLTP). Only compare fuel consumption, CO2 and electric range figures with other cars tested to the same technical procedure.

Start Your Career In Healthcare

We offer courses at a wide range of levels, including our new T Level in Health: Adult Nursing at post-16 level and our Nursing Associate Foundation Degree.

You'll learn in our innovative new healthcare zone, designed in collaboration with Salisbury District Hospital.

With modern facilities including a realistic hospital training ward, mock ambulance and home care environment, you'll gain hands-on skills for real-life situations.

Brand New Facilities for 2024



Scan here to find out more about our Health & Social Care courses

For organisations interested in working in partnership with our healthcare programmes, contact Louise Wood via louise.wood@wiltshire.ac.uk

Difficult Times Require Sensitive care

Batt Broadbent Solicitors are here to help you deal with all of the legal issues which arise when a loved one has passed away or if you are looking to put your affairs in order.

WE CAN OFFER THE FOLLOWING SERVICES:

- ✓ Wills
- ✓ Lasting Power of Attorney
- ✓ Court of Protection
- ✓ Inheritance Tax Planning
- ✓ Probate

TEL: 01722 411 141
 EMAIL: service@battbroadbent.co.uk
 WEB: www.battbroadbent.co.uk

SALISBURY OFFICE:
 Minster Chambers, 42/44 Castle Street,
 Salisbury, Wiltshire, SP1 3TX

CHIPPENHAM OFFICE:
 65 St Mary Street, Chippenham, Wiltshire, SN15 3JF

Batt Broadbent Solicitors LLP is a limited liability partnership in England & Wales.
 Reg No. OC380270 Authorised & regulated by the Solicitors Regulation Authority, SRA No. 591668



You want to ensure your business is compliant

You need help recruiting

You simply need some reassurance



Call us if...

Your business is changing

You need HR help so you can focus on your business

An employee has raised a complaint

You need help with managing employee performance

You are looking for training and development

01722 626 750

E sally.bennett@hrdept.co.uk
W hrdept.co.uk/salisbury-andover

Preventing People Problems



OFFICE SUPPLIES NOW.co.uk



YOUR LOCAL WORKPLACE SUPPLIER: OFFICE FURNITURE & INTERIORS, FIT OUT, OFFICE STATIONERY, CATERING & JANITORIAL SUPPLIES, SECURE SHREDDING, FACILITIES & WORKWEAR.






Contact John Fitton on
0845 833 3001
sales@officesplinesnow.co.uk




Making soldiers' lives better

"We are proud to support Salisbury Hospice"

www.aspiredefence.co.uk



Fairlawn House

Our 15 bedroom Georgian town house is a cosy home from home, moments from historic Stonehenge.

- Authentically local
- Private cycle tours
- Afternoon teas on request
- Close to historical sites

15% off room rates for bookings of 12 to 15 rooms

LITTLE PLACE

41 High Street, Amesbury
[@littleplacestays](http://www.alittleplace.co.uk)



Offering a Prompt and Courteous Service

- Septic Tank Emptying
- Temporary Toilet Hire
- Luxury Trailer Toilets and Showers
- Welfare Units Refrigerated Trailer units

01747 871464
www.robbeale.co.uk
www.temporayfacilities.co.uk
admin@temporayfacilities.co.uk




Landscapes design and consultancy

www.midayo-landscapes.co.uk
T: 07549 814912 E: mike@midayo-landscapes.co.uk

Proud to support **Salisbury Hospice**




We are open to take appointments and can support you in the following areas:

- Pension advice
- Retirement planning
- Inheritance tax planning
- Investment advice including ISA and Bonds
- Life, Critical illness and Income Protection

Talk to a friendly St Barts adviser today:

01202 520550
www.stbartsfinance.co.uk
admin@stbartsfinance.co.uk
15 Oatmeal Row, Salisbury, Wiltshire SP1 1TH

The value of investments and any income from them can fall as well as rise and you may not get back the original amount invested.
Approved by The Openwork Partnership 13/09/2024.





+44 (0)1794 884567
www.lascarelectronics.com

Manufacturer of data loggers and panel displays.
Proudly involved with the local community.

Module House, Whiteparish, Wiltshire SP5 2SL



Roma Fundraising have provided this publication free of charge through the kind contributions of the advertisers.

If you would like to advertise in future editions of this publication, please call 01706 719 972 romafundraising.co.uk



Registered with FUNDRAISING REGULATOR



This programme has been printed on carbon balanced paper (CEP006603)
www.carbonbalancedpaper.com



Your Contact Details

Title:	First Name:	Surname:
Mobile Number:	Alternative Contact Number:	
Email Address:		
First Line of Address:		
Second Line of Address:	County:	
Country:	Postcode:	

Regular Donations

Payment details:

NatWest Bank PLC, 48 Boar Row, Salisbury, SP1
1DF for the credit of Salisbury Hospice Charity.
Account No: **47152680** Sort Code: **54-41-19**

Account Number:

Sort Code:

Name of Bank:

Address:

Postcode:

I would like to make a donation of:

£5 £10 £15 Other: £

Monthly Quarterly Annually

and thereafter until you receive further notice
from me in writing to my bank. Please cancel
any previous instruction.

Signature

Date

Individual Donations

I would like to make a donation of:

£5 £10 £15 Other: £

Card No:

Start Date: / Expiry Date: /

CSV:

Please make cheques payable to Salisbury Hospice Charity

Gift Aid Contribution

Boost your donation by 25p of Gift Aid for every £1 you
donate. Gift Aid is reclaimed by the charity from the tax you
pay for the current tax year.

**I want to Gift Aid my donations and any donations I make in
the future or have made in the past 4 years.** (Please tick)

I am a UK taxpayer and understand that if I pay less Income
Tax and/or Capital Gains Tax than the amount of Gift Aid
claimed on all my donations in that tax year it is my
responsibility to pay any difference.

Signature

Date

**Please send your donation/completed form to Salisbury Hospice Charity, Odstock Road,
Salisbury, SP2 8BJ using the freepost envelope enclosed. Tel: 01722 416353.**